



BoostBloC®
Post-heating module



PowerBloC
Post-heating module



BoostBloC® / PowerBloC DN 25+

Technical data and product information





BoostBloC® post-heating module - for a high heating and hot water convenience

In order to have sufficient heat energy available on days below the heat pump design point, the PAW BoostBloC® can be used like an additional instantaneous water heater. It generates the required thermal energy directly from the mains power and thus maintains comfort.

The post-heating module is a preassembled group of fittings for the electrical post-heating of heating or domestic water. If necessary, it can also be integrated directly into the heating circuit of heat pumps (Requirements for the coolants must be observed!)

The BoostBloC® is a wall-mounted station that can be completely shut off by ball valves for easier maintenance.

The station requires an additional controller. It can often be controlled directly by the heat pump controller or an energy manager.

The main controller can switch the output of the instantaneous water heater in stages via three integrated load relays. The relays are controlled via 230 V, which is provided by the main controller. If the main controller only has 230 V suitable contacts, the voltage can also be tapped on the power side at the instantaneous water heater.

Depending on the main controller and connection variant, the pump should be switched at the same time as the heat generation. The pump can also be switched without heating. However, the heating should never be operated below the minimum flow rate or dry.

For stations with an integrated switch valve, the flow can be stratified into two different storage areas or different storage tanks. The 2-point actuator requires a continuous and a switching phase.

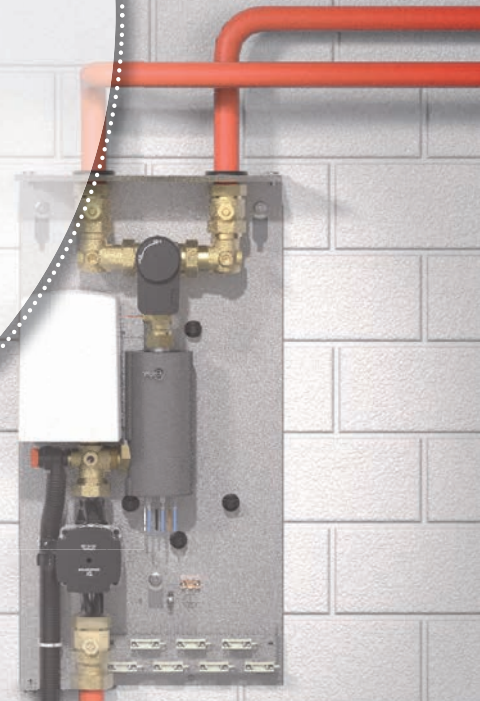
Application range BoostBloC®:

- Maintaining comfort by reheating via mains power
- Stratification option: integrated switch valve

Application range PowerBloC:

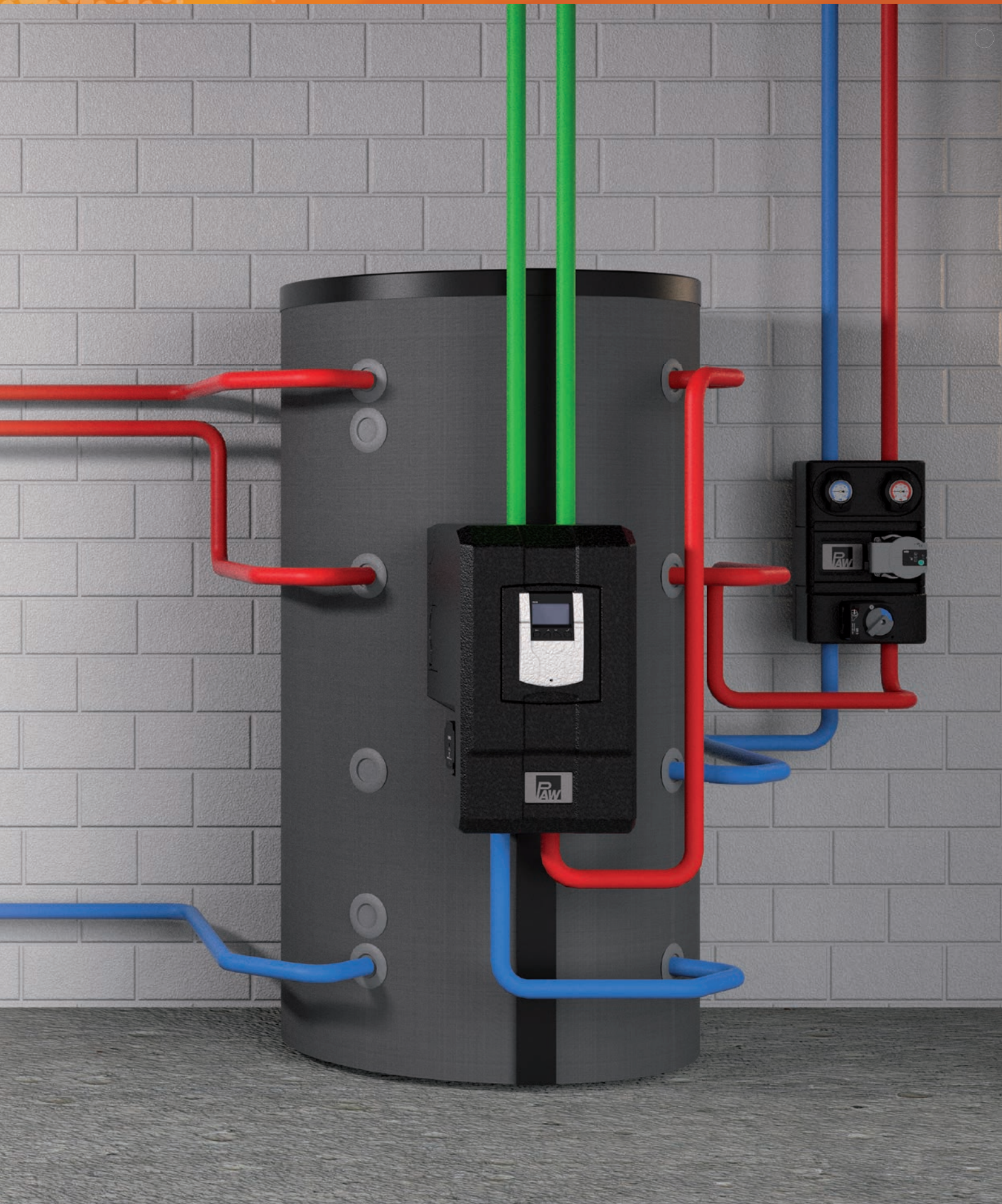
- Maintaining comfort by reheating via mains power
- Introduction of the highest possible temperatures into a storage tank, e.g. for PV overcurrent utilisation
- Stratification option: external switch valves at the storage tank, e.g. PAW switch valve PV3

Technical data		
	BoostBloC®	PowerBloC
Hydraulic connections		
Flow / return consumer	1½" int. thread	
Flow / return heat pump	1½" int. thread	
Electrical data		
Heating cartridge		
Electric connection	400 V 3N 50 Hz	
Nominal output level 1	P1 = 2600 W	
Nominal output level 2	P2 = 3000 W	
Nominal output level 3	P3 = 3200 W	
Cable cross-section	2.5 - 6 mm ²	
Station	protection category: IP20, protection class I	
Safety temperature limiter		
Voltage	400 V	
Switch-off temperature	85 °C - 8K	95 °C +/- 3K
Circulation pump	Grundfos UPM4L 25-75 pump connection: 230 VAC/50 Hz, 0.58 A PWM interface with feedback signal for volume flow rate determination	Wilo Para G 25/8-75 pump connection: 230 VAC/50 Hz, 0.66 A PWM interface with feedback signal for volume flow rate determination
Actuator	PS5-230-2P 5 Nm, 2-point control 230 V, 50 Hz, <5 VA, 13 s/90°, 60 % EDmax protection category: IP42, protection class II	/
Control heating cartridge	3x Relais (230 VAC, 50 Hz, < 5 VA) external control required	
Sensors	1 x Pt1000	2 x Pt1000
Operating data		
Max. operating pressure	0.3 MPa (3 bar)	
Minimum volume flow rate (during heating)	500 l/h	
Safety valve	3 bar	
Kvs value	8.4 m ³ /h	10.9 m ³ /h
Residual head (at 2000 l/h)	60.8 kPa	55.5 kPa
Nominal content	0.8 l	0.6 l
Fluid type	Heating water	
Dimensions		
Nominal diameter	DN 25	
Width	406 mm	316 mm
Height	711 mm	
Depth	200 mm	
Installation length	661 mm	
Materials		
Valves and fittings	Brass, copper	
Seals	EPDM	

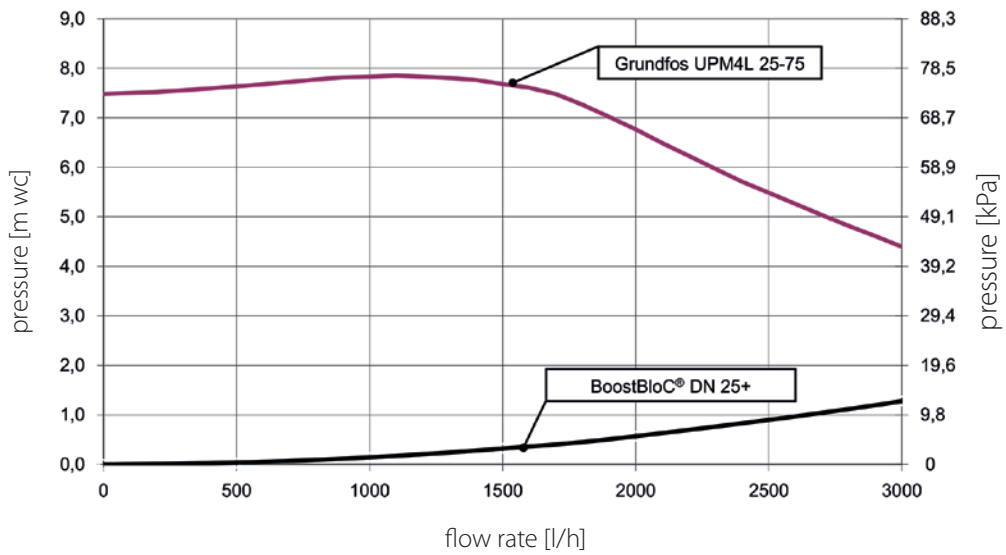
NEW

Advantages BoostBloC® / PowerBloC:

- ✓ Pump group adapted to the requirements of a heat pump
- ✓ Electric post-heating to ensure the heat supply
- ✓ Maximum safety thanks to safety temperature limiter
- ✓ Quick-switching 3-way switch valve with constant flow in both switching positions (AB-A; AB-B)
- ✓ Flexible pump control via PWM signal or relay (hybrid pump)
- ✓ Additional emergency heating in case of malfunction
- ✓ Large terminal area for simple and secure connection
- ✓ Can be combined with various controllers - please contact us



BoostBloC®:



PowerBloC:

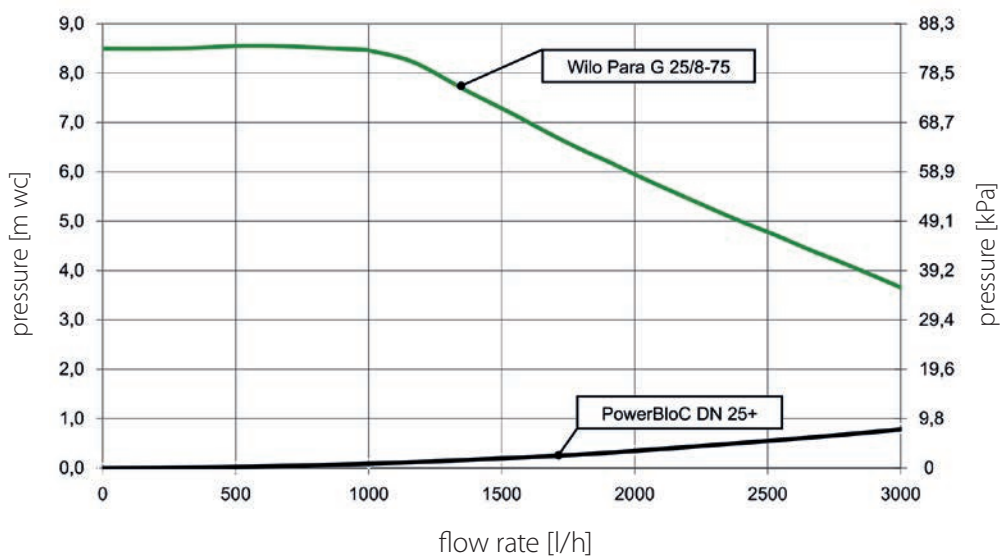


Illustration		Item no.
	<p>BoostBloC® DN 25+</p> <p>Pump: Grundfos UPM4L 25-75</p>	<p>6743093</p>
	<p>PowerBloC DN 25+</p> <p>Pump: Wilo Para G 25/8-75</p>	<p>6842093</p>





PAW GmbH & Co. KG

Böcklerstraße 11

31789 Hameln

Germany

+49-5151-9856-0

+49-5151-9856-98

info@paw.eu

www.paw.eu



996x4x093-fly-en • Version: V01 • Issued: 2025/01
Printed in Germany • We reserve the right to make
technical changes without notice!