



ComBloC
Heating | Cooling

NEW



ComBloC

Technical data and product information



ComBloC – the innovative solution

- fast und simple installation
- low thermal conductivity
- condensate and corrosion resistance
- optionally with automatic balancing of the distribution manifold

NEW

**SMART
HOME
READY**



Advantages ComBloC:



innovative, durable material

good insulation properties - low heat loss - low thermal expansion - impact-resistant material - corrosion-resistant and lightweight



very fast installation

high degree of prefabrication - pre-assembled - lightweight material - hand-tight - flexible connection to standard installation types



cost-optimised

low investment costs - quick installation and commissioning - plug-in solution - optimised operation thanks to hydraulic balancing



simple integration

thanks to high degree of prefabrication and easy handling - with MCom system: connection to boiler control - building management system and SmartHome



resource-saving

recyclable and durable material - high insulation properties - energy-optimised heating and cooling



all PAW advantages are retained

modularity (can also be retrofitted) - flexibility (flow on the right or left) - easy to install and maintain thanks to interchangeable components - can be completely shut off



optionally with hydraulic balancing

MCom system can be retrofitted: automatic hydraulic balancing on the distribution manifold - constant differential pressure flow/return - pump control via PWM signal - measurement of flow/return temperatures - flow temperature control possible - data bus connection to all common control systems - transmission of error messages - service messages - simple commissioning with plug and play!

Benefit from the advantages of the innovative material

- low thermal conductivity
- impact-resistant
- resistant to deformation
- long-lasting
- recyclable
- cost-optimised
- corrosion-resistant



Features of the ComBloC components:

ComBloC – new PAW union nut

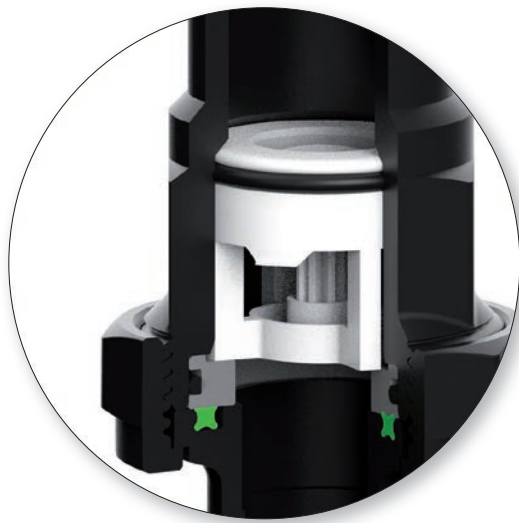
one union nut, two functions:

- ensures a secure and detachable connection to the next element (spanner flat)
- cylindrical contour for form-fit transition to the insulation -> high insulating effect



ComBloC – x-ring

- double sealing function with less pre-pressing
- better sealing properties thanks to x-shape - compared to a flat seal



ComBloC – modular distribution manifold

- expandability according to the modular principle:
2-fold, 3-fold, 4-fold distribution manifold



ComBloC – wall bracket

- simplified wall mounting thanks to modular principle
- simple wall assembly through clip-on and self-fixing



ComBloC – flow on the left/right

- high flexibility thanks to symmetrical components
- flexible according to requirements



flow on the right



flow on the left



ComBloC – MCom ready

- smart heating circuit with hydraulic balancing
- intelligence for retrofitting - simple integration of sensors and control

Utilise the full functionality:

- hydraulic distribution manifold balancing
- flow temperature control
- weather-compensated control (optional)
- differential pressure sensor between flow and return
- temperature sensors integrated in the flow and return
 - predictive maintenance possible
 - RS485 and Modbus/TCP/IP interface



Technical data ComBloC	C51	C54
Materials		
Valves and fittings	Glass fibre reinforced thermoplastic / brass	
Seals	EPDM	
Insulation	EPP	
Operating parameters		
Nominal pressure	3 bar	
Max. operating temperature	95 °C	
Kvs value	6.9	5.3
Connections / Dimensions		
Connection generator	1½" ext. thread, flat sealing	
Connection consumer	1½ " ext. thread - x-ring seal	
Installation length	555 mm	
Centre distance	125 mm	
Width	330 mm	
Recommended application range		
Max. power at a temperature difference of 20 K		
Max. flow rate	2150 l/h	1750 l/h
Max. power	50 kW	40 kW
Max. propylene glycol content	50 %	

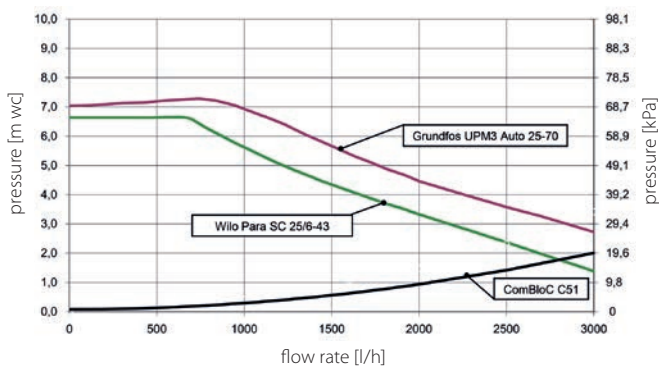
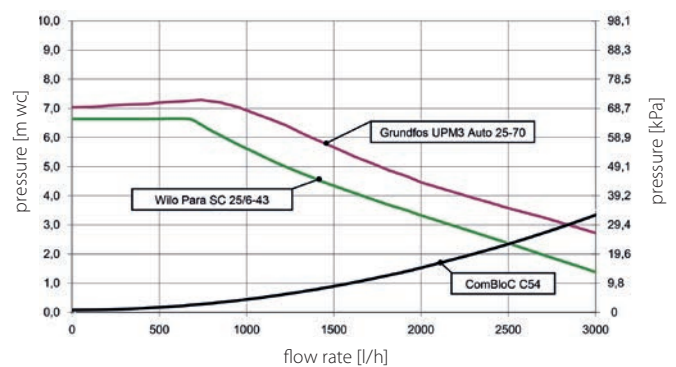
Pressure drop ComBloC C51 – DN 25

Pressure drop ComBloC C54 – DN 25


Illustration		Item no.
	<p>ComBloC C51 DN 25 direct heating circuit</p> <p>Wilo Para SC 25/6-43</p> <p>Grundfos UPM3 Auto L 25-70</p>	<p></p> <p>4836011WP6</p> <p>4836011GM6</p>
	<p>ComBloC C54 DN 25 mixed heating circuit, with actuator SR5</p> <p>Wilo Para SC 25/6-43</p> <p>Grundfos UPM3 Auto L 25-70</p>	<p></p> <p>4836061MWP6</p> <p>4836061MGM6</p>
	<p>Distribution manifold DN 25 flange 1" x 1½" ext. thread, insulated</p> <p>Modular distribution manifold MVC-2 DN 25 – 2-fold</p> <p>Modular distribution manifold MVC-3 DN 25 – 3-fold</p> <p>Modular distribution manifold MVC-4 DN 25 – 4-fold</p>	<p></p> <p>4834121</p> <p>4834131</p> <p>4834141</p>
	<p>Extension module DN 25 for extending an existing modular distribution manifold</p>	<p>4834111</p>
	<p>Wall bracket ComBloC DN 25 for mounting a single ComBloC or ComBloC with distribution manifold</p>	<p>4834721</p>
	<p>Screw connection set DN 25 Connection set for sealing on the consumer side - suitable for the sealing concept with x-ring. 2x insert 1" int. thread, 2x composite union nut 1½"</p>	<p>483431</p>
	<p>Connection set DN 25 Connection set for pressing on the consumer side - suitable for the sealing concept with x-ring. Depending on the type of application, suitable sleeves are to be provided by the customer. 2x stainless steel pipe $\varnothing=28$ mm, 2x union nut 1½"</p>	<p>483432</p>

Good reasons for PAW ...



replaceable spindles



all components can be locked (service-friendly)

flexibility (flow on the left/right)

integration of heat flowmeter possible



modularity (expandability)

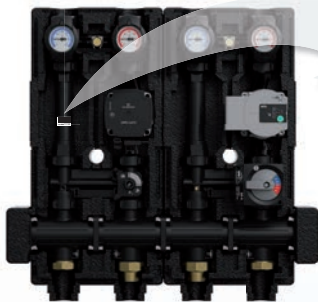


5 years manufacturer's warranty



serial number

for traceability in the event of a warranty claim and spare parts identification





PAW GmbH & Co. KG

Böcklerstraße 11

31789 Hameln

Germany

+49-5151-9856-0

+49-5151-9856-98

@ info@paw.eu

www.paw.eu



9948360xx-fly-en - Version: V03 - Issued: 2025/01
Printed in Germany • We reserve the right to make
technical changes without notice!